



Professor Tiina Laatikainen
University of Eastern Finland

National reform 2019 in Finland 'To the County Administration'

- Integrated social- ja health care
- Free choice of care
- Renewal of financing
- Stronger governmental steering



WHY?

PROVISION

Outpatient

	Municipalities / hospital districts	Private providers
Physician visits	71 %	16 %
Dentist visits	59 %	41 %

	Municipalities / hospital districts	Private providers
Inpatient		
Care periods	95 %	5 %

POOLING SCHEME

Municipal

Private

Occupational

93 %

7 %

70 %

30 %

43 %

57 %

Municipality
- Municipal taxes
- State subsidy (~ 1/4 of expenses)

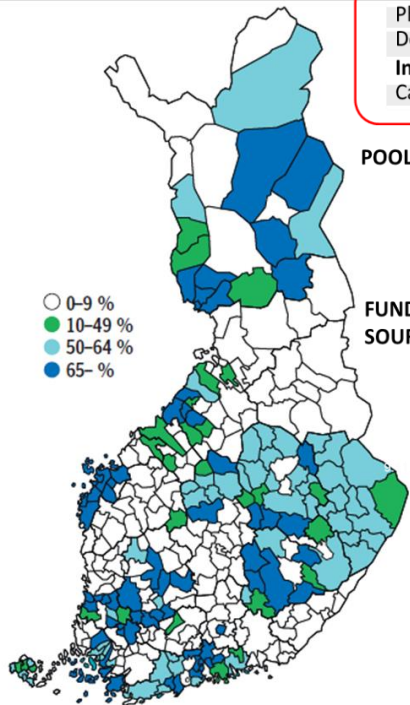
User fees

Medical sickness insurance
NHI
1.24 % Insured (of income)
- Employers (of salary) 1.97 %
(50 %) State (of tot. expenses) -

Income Insurance
Employers

FUNDING SOURCE

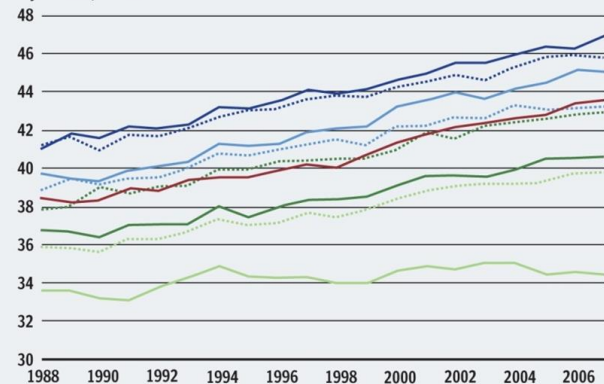
○ 0-9 %
● 10-49 %
● 50-64 %
● 65- %



KUVIO 1.

35-vuotiaiden miesten elinajanodote jokaisessa tuloviidenneksessä sosiaaliryhmän mukaan 1988-2007.

Elinajanodote, vuotta



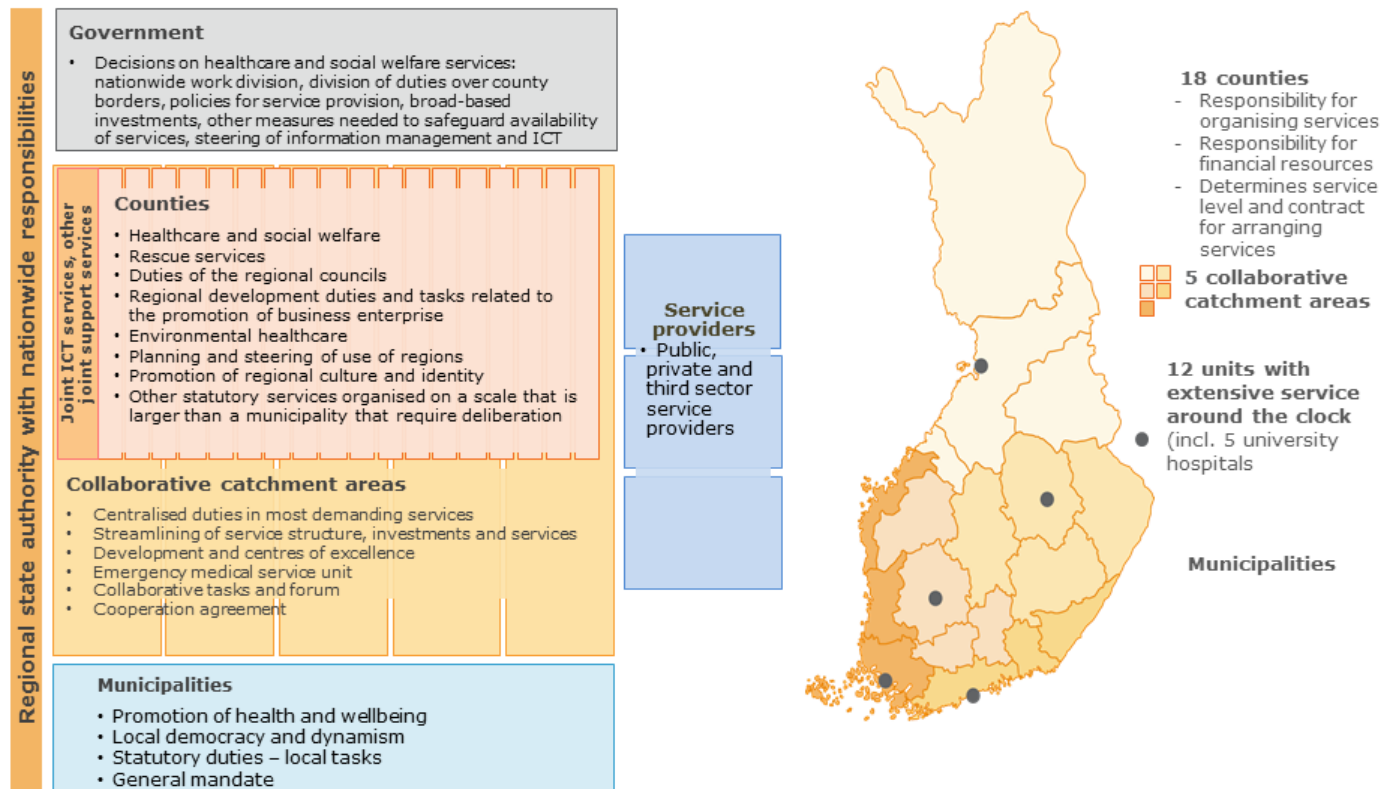
..... Ylempi toimeihenkilö
..... Alempi toimeihenkilö
..... Työntekijä
..... Yrittäjä
— 1. tuloviidenneks (ylin)
— 2. tuloviidenneks
— 3. tuloviidenneks
— 4. tuloviidenneks
— 5. tuloviidenneks (alin)

2015	Pohjois-Karjala	Joensuu	Heinävesi	Valtimo	Iloanta	Kitee	Suomi
Väestö	164 755	75 514	3 574	2 324	5 336	10 832	5 487 308
0-14 v, %	14,5	14,4	11,7	12,7	9,7	12,0	16,3
15-64 v, %	62,0	65,9	53,2	55,6	55,1	57,8	63,2
≥ 65 v, %	23,5	19,8	35,1	31,7	35,2	30,2	20,5
≥ 75 v, %	10,1	10,1	15,2	15,1	16,2	14,1	8,8
	(ml. H-vesi)						

Siun
SOTE

www.siunsote.fi

New functions of the counties as of 1 January 2019



Integration of services for families with children

Counties organise all health and social services for children and families and coordinate the services of different providers into efficient and customer-oriented care and service chains.



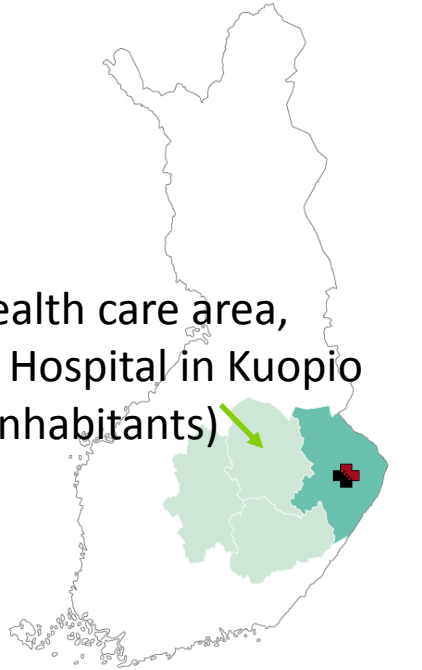
Social- and Health Care Reform in North Karelia

Siun sote has arranged care on behalf of all municipalities since 1.1.2017

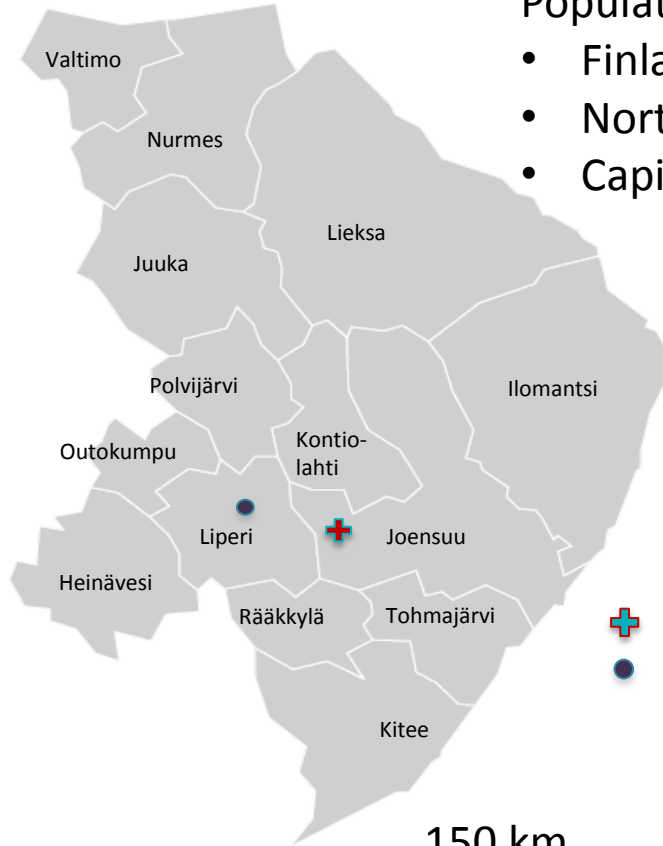
- New municipal authority in North Karelia
 - Primary Health Care and Social Services of 14 Municipalities
 - Special Health Care, Central Hospital of NK
 - Environmental Health
 - Rescue and Emergency services
- Total amount of staff over 7000 persons, vacancies for 5300
 - Over 400 physicians
 - 3000 nurses and other health care personnel
 - Social workers, assistants, technicians, firemen, administrative personnel etc...
- Budget about 680 million euros; fixed revenues
- The biggest employer in North Karelia

14 Member Municipalities, 170.000 Inhabitants

Tertiary health care area,
University Hospital in Kuopio
(820.000 inhabitants)



300 km



Population density (/km³)

- Finland 17,5
- North Karelia < 10
- Capital area 170



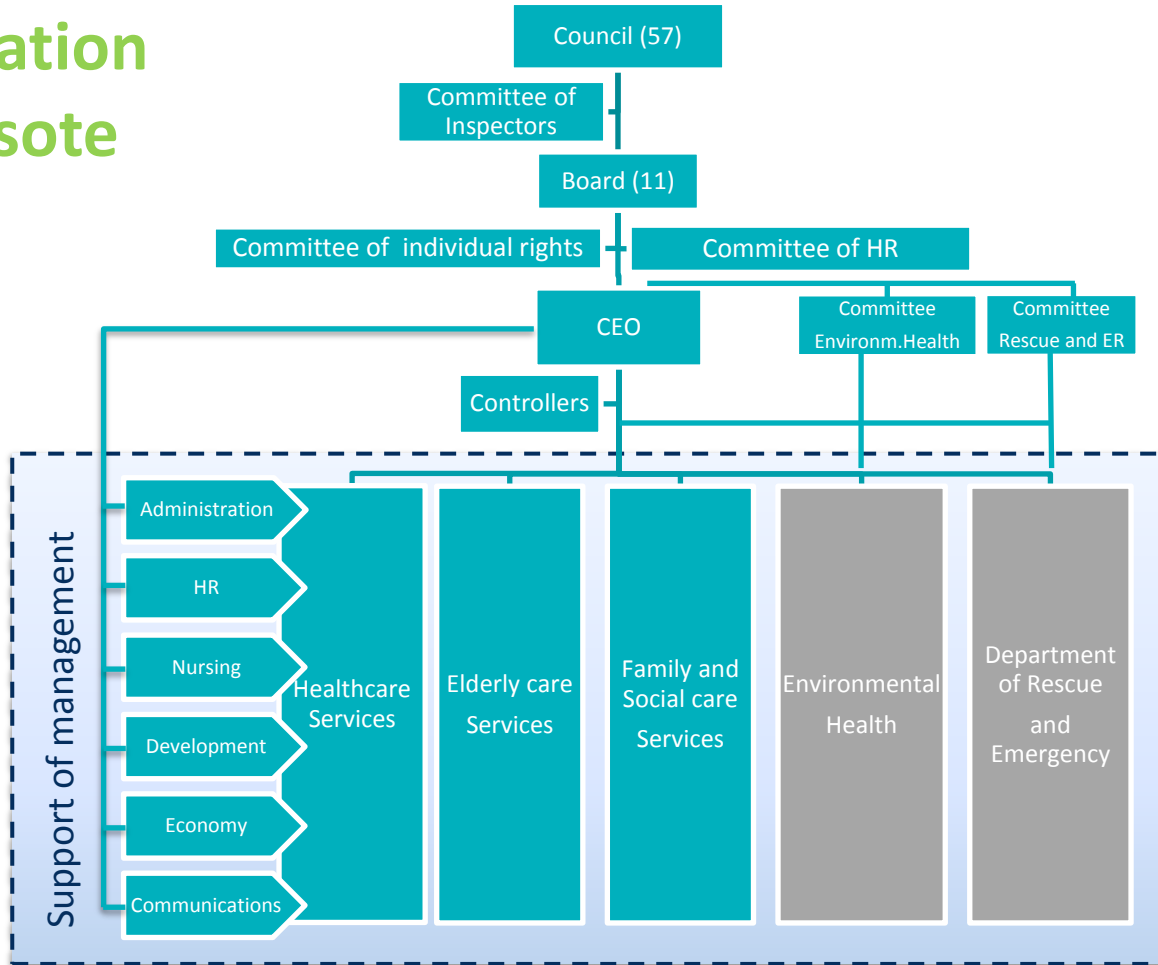
CENTRAL HOSPITAL, Joensuu



HONKALAMPI CENTRE, Liperi

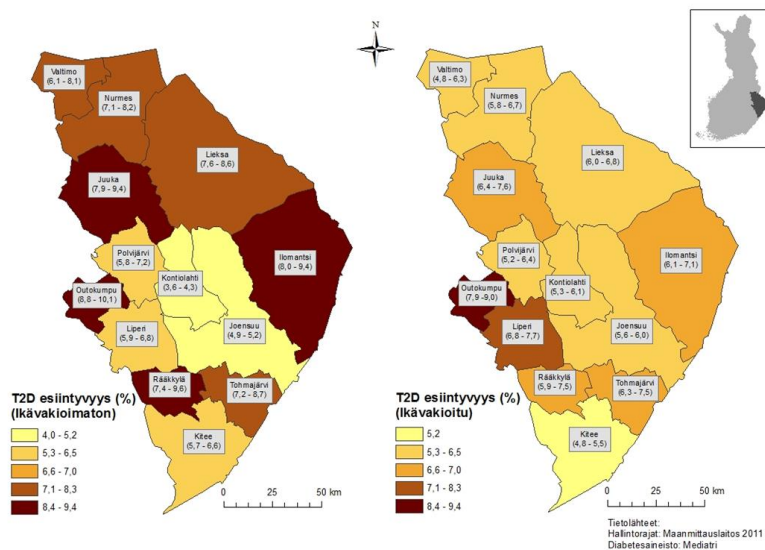
150 km

Organization of Siun sote

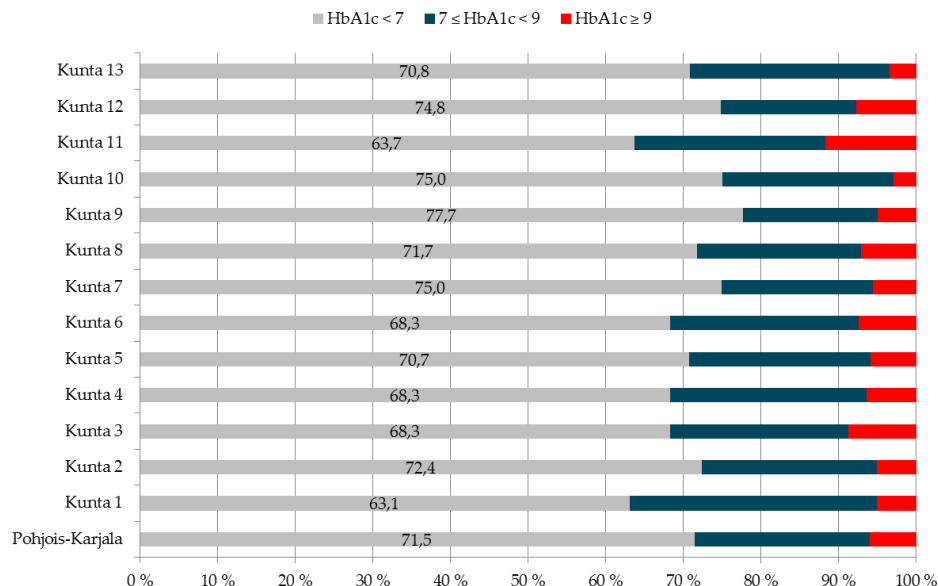


Regional electronic patient and client records and laboratory services

- Non-profit organization, North Karelia ITC Ltd administers the regional patient and client records that are structural (Mediatri and ProConsona)
- One laboratory service provider (comparable data)



Prevalence of T2D



Thank You !